

# Explore **TRADITION**

Workshops of Japanese Culture and Tradition  
Join Heart-Moving Experience.



Tradi



# Enrich Our Hearts Through Exploring Japan's Timeless Traditions

In Japan, many craftspeople and traditional culture experts continue to create and practice their arts, drawing on knowledge and techniques passed down through the ages.

We offer workshops, thoughtfully developed with these masters, to allow participants to experience their craft, learn from their expertise, and discover the true essence of these ancient traditions.

Our mission is to invite discerning visitors from abroad to immerse themselves in these cultural treasures, fostering deep appreciation and helping to uncover sustainable, modern approaches to preserving and passing down this invaluable heritage — which we believe is a unique and impactful contribution to human development!

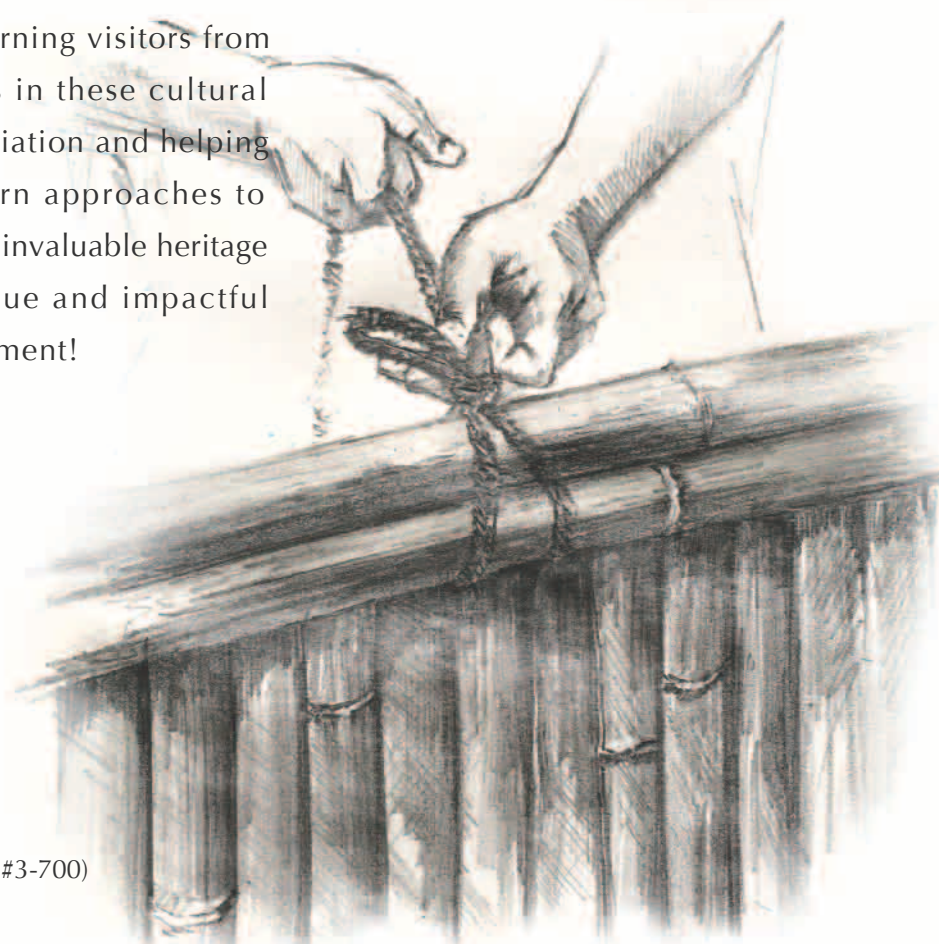
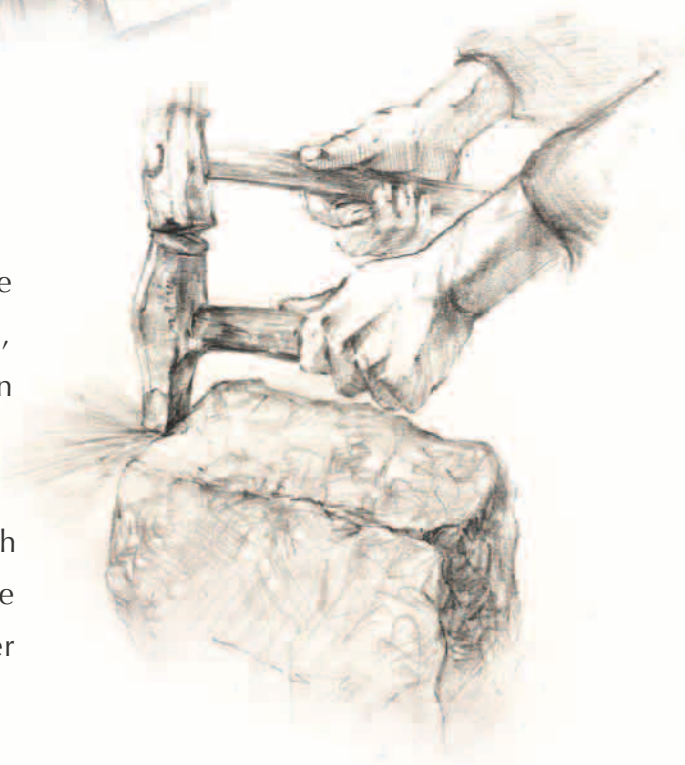
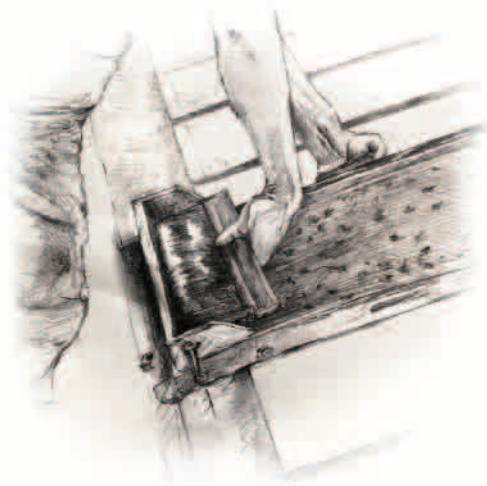
Contact us!



[guestsupport@tradi-jp.com](mailto:guestsupport@tradi-jp.com)

**Tradi LLC**

(Travel Agency Authorized by Kyoto Pref. #3-700)



# Booking Process

---

## 1. Find Your Experience

- Browse this catalogue or our website to find the experience that interests you. Contact us if you need help choosing.

## 2. Contact Us to Confirm Details

- Email us to check available dates and expert schedules.
- Let us know if you require an interpreter. Most of our experts speak only Japanese, but we can arrange for an interpreter based on your needs.

The interpretation requirement can be found next to the plan:

### *Interpretation required*

Interpretation is necessary for effective communication and completing the experience. Please arrange interpretation through us or on your own.

### *Interpretation recommended*

An interpreter is beneficial for fully understanding the expert's culture. While not mandatory, it is ideal to arrange interpretation through us or independently.

If we arrange the interpreter, costs will be based on the rates listed below:

※ The price is per group and varies depending on the number of people in your group:		1 or 2 people	3 or 4 people	5 people or more
~ 2 hours		¥15,000	¥15,000	¥20,000
~ 4 hours	Except below	¥15,000	¥20,000	¥25,000
	#1 C & D	¥20,000	¥25,000	¥30,000
~ 7 hours		¥30,000	¥35,000	¥40,000
~ 1 day		¥40,000	¥50,000	¥60,000

- Provide your accommodation details so we can assist with transportation.

## 3. Visit the Studio and Discover the True Attraction

- Experience the craft or cultural practice firsthand and immerse yourself in its beauty and significance.

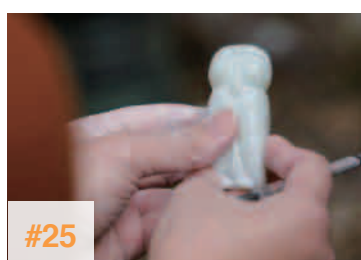
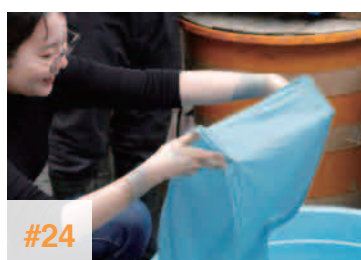
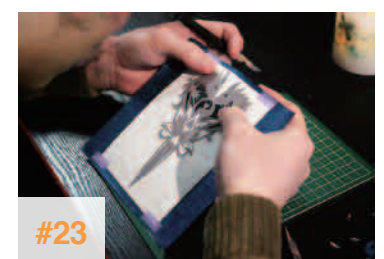
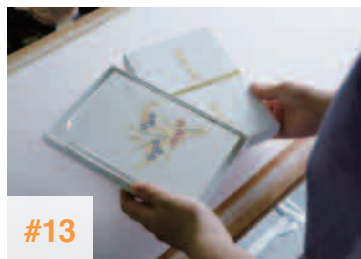
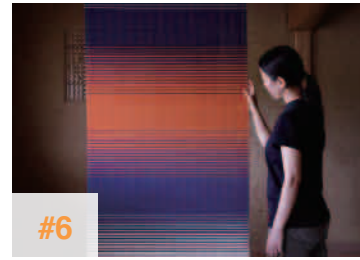
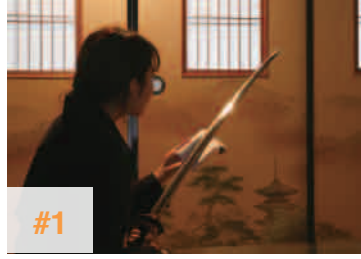
## 4. Arrange for Pickup or Shipment

- If the work requires additional time for completion, the expert or we will arrange for shipment. We will discuss when you book.

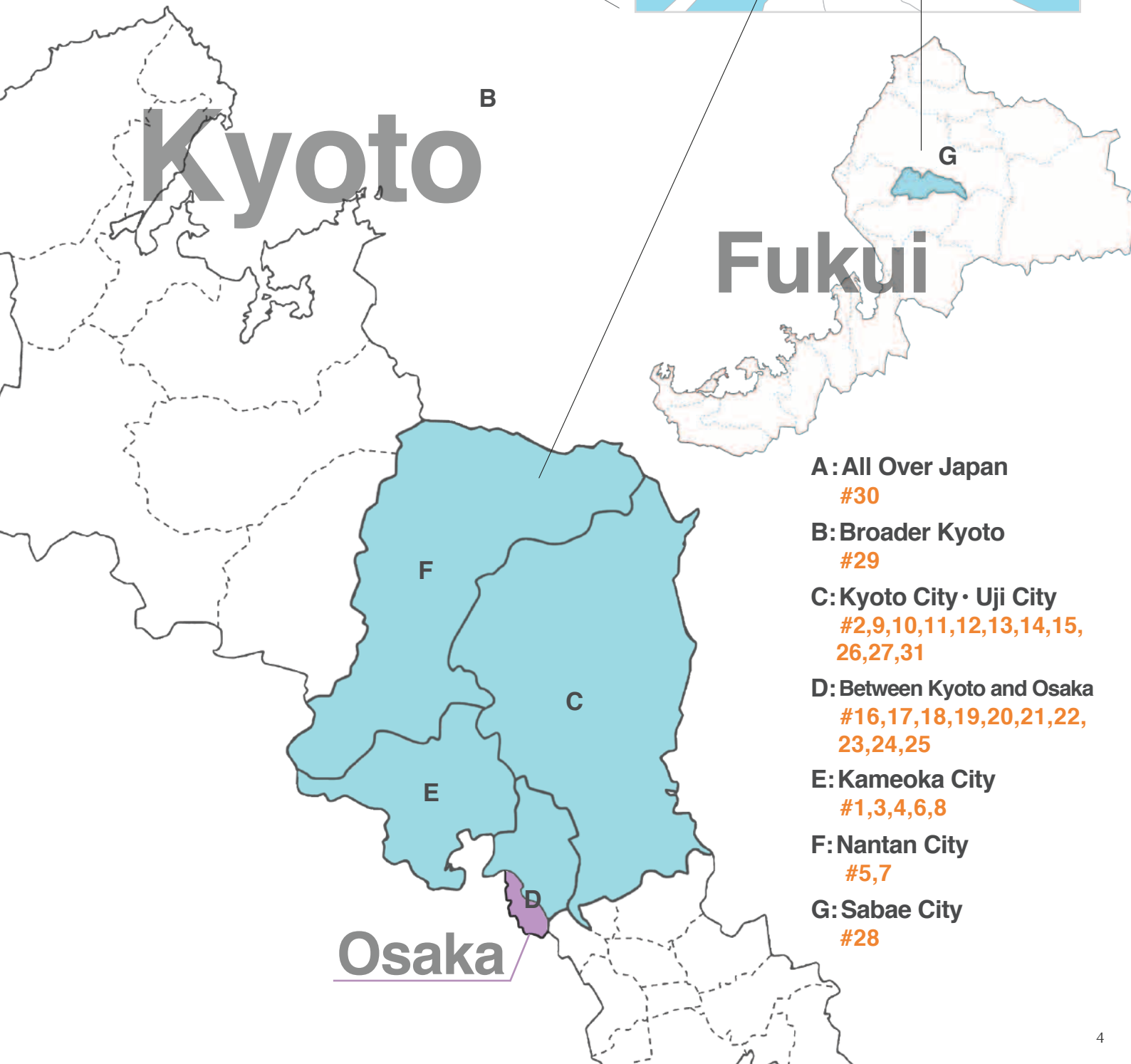
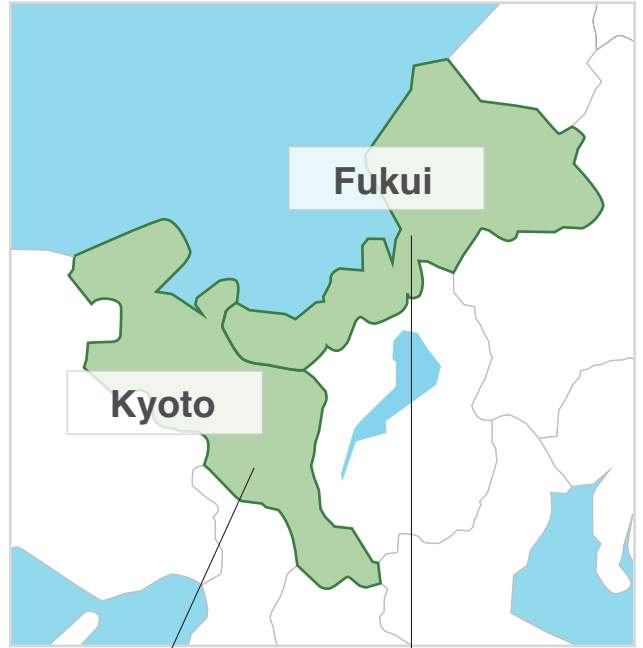
# Index

#1-#27 FIT

#28-#31 Group



# Area Map



- A: All Over Japan**  
#30
- B: Broader Kyoto**  
#29
- C: Kyoto City · Uji City**  
#2,9,10,11,12,13,14,15, 26,27,31
- D: Between Kyoto and Osaka**  
#16,17,18,19,20,21,22, 23,24,25
- E: Kameoka City**  
#1,3,4,6,8
- F: Nantan City**  
#5,7
- G: Sabae City**  
#28



## Forge Japanese Sword



### Experience

In this series of courses, after learning the history and cultural background of the Japanese sword from the smith, you will craft your own blade under the guidance of the smith. Throughout the courses, you will learn the entire process of Japanese sword making directly from the smith. The smithing technique, which the smith has learned through working alongside other elder smiths and observing their techniques, surprisingly functions in a manner very similar to modern steel processing techniques. The smith will teach it to you during the courses. The smith can precisely guess the temperature of steel from its color and estimate the temperature of water with his hands. Let's explore the magnificence of the forging techniques that people in the past have nurtured and that still endure in this age.

### Steps

- **Learn Culture**  
Learn how swords have been appreciated.
- **Tanren (Plan A & B Only)**  
Purify Tamahagane through continuous hammering.
- **Hizukuri**  
Make shape of the sword.
- **Tsuchitori**  
Apply clay on the sword and draw shape.
- **Yakiire (Quenching)**  
Cool the heated blade quickly with water.

### Information

Time	Plan A,B: up to 9 hrs. Plan C,D: up to 4 hrs.
Pax	1~4 (Plan A,B:1)
Requirement	12+ years old

### Plans *interpretation recommended*

- A : Japanese Sword (Uchigatana)  
**2,200,000 JPY / blade**
- B : Japanese Sword (Tantou)  
**800,000 JPY / blade**
- C : Survival Knife & Leather Cover  
**59,000 JPY / blade**
- D : Small Knife made of Tamahagane  
**38,000 JPY / blade**

### Place ▶ [Area Map E](#)

Kameoka  
(30 mins. train & 25 mins. taxi ride from Kyoto Station)





## Forge Sword of Fudo Myoo



### Experience

**A**t the Tanukidanisan Fudo-in, known as a symbol of courage and vitality, located in Sakyo-ward of Kyoto-city, you can create your own original 'Fudo Sword'.

In the serene surroundings of the exclusive Tanukidanisan Fudo-in, and under the watchful gaze of Fudo Myoo wielding a sword to cut through evil, skilled swordsmiths who have inherited ancient techniques will masterfully manipulate tamahagane, the material used for Japanese swords. They will forge and temper a unique sword specifically for you. You can join Tanren, the most dynamic part of forging. Before and after the sword's creation, the temple's prayer monks will conduct special blessings.

To ensure that you can enshrine this sword at your home for generations to come, it will be delivered to you with a custom-designed display shelf.

This unique experience promises an exhilarating day like no other, allowing you to wield the unparalleled power entrusted by Fudo Myoo himself.

### Steps

- **Beginning Prayer**  
Conduct a special Goma prayer for your good fortune.
- **Sword Making**  
Craft your sword by following the traditional Katana forging process. The initial shape of the sword will be created on the day and will be perfected by the master smith in two years.
- **Final Prayer**  
Perform a blessing ceremony for your sword. The completed sword, along with a display shelf, will be shipped to you.

### Information

Time	9 hrs.
Pax	1
Requirement	6+ years old

### Plans *interpretation included*

Craft Fudo Myoo Sword **1,815,000 JPY / person**

### Place ▶ [Area Map C](#)

Kyoto City  
(30 mins. taxi ride from Kyoto Station)





## Yakishime Pottery



### Experience

Next to a pottery kiln in the forests of Kameoka, Kyoto, you can create your own original pottery using the traditional 'yakishime' technique. With 'Yakishime,' the pottery's surface is not glazed; instead, the ash produced during the firing process imparts natural and beautiful colors and patterns to the pottery. The firing process involves burning wood continuously for three days and three nights, allowing for the firing of 500-800 pottery pieces at a time. Your piece will be fired in the kiln and sent to you three to six months later. If time allows, you can also observe the firing, which takes place only three or four times a year and offers a rare opportunity to witness. Furthermore, you can experience loading wood into the kiln under the guidance of the artist.

### Steps

- **Handcraft Pottery**  
Shape your piece by hand.
- **Guided Kiln Firing Observation**  
Observe the firing.
- **Participation in Kiln Firing (Plan A Only)**  
Place firewood into the kiln (about 15 pieces).

### Information

Time	2 hrs.
Pax	2~4
Requirement	6+ years old

### Plans *interpretation required*

A : Craft and Participate Kiln Firing	<b>12,000 JPY / person</b>
B : Craft and Observe Kiln Firing	<b>9,000 JPY / person</b>

### Place ▶ [Area Map E](#)

Kameoka  
(30 mins. train & 25 mins. taxi ride from Kyoto Station)







## Stone Lantern



### Experience

In the peaceful countryside near Kyoto, surrounded by fields and nature, you'll find the workshop of a master stone lantern craftsperson. This area, once a bustling route between Osaka and Tamba, is steeped in history, with tens of ancient stone-carved tombs, old shrines, and torii gates that tell the story of its vibrant past. After a guided tour of the region, led by the craftsperson whose family has been working with stone for generations, you will step into his workshop to create unique works.

With over 120 years of history, this fifth-generation craftsperson is government-certified, and his works are featured in some of Kyoto's most famous locations. Under his direct guidance, you will craft a 'Stone Table Lantern,' a hand-sized lantern for indoor use. Using the same tools and materials employed in traditional stone lantern making, you will experience firsthand the precision and beauty of Kyoto's time-honored stone craftsmanship.

### Steps

- **Measurement**  
Mark the stone to be cut with charcoal.
- **Carving**  
Carve the stone into the desired shape.
- **Finishing**  
Delicately hammer the surface to achieve a unique surface texture.

### Information

Time	Plan A : 4 hrs. / Plan B : 2 hrs.
Pax	PlanA:1~2/ PlanB:1~5
Requirement	12+ years old

### Plans *interpretation required*

A : Table Lantern with Stone used for Stone Lantern	<b>93,000 JPY / person</b>
B : Table Stone Lantern	<b>57,000 JPY / person</b>

### Place ▶ [Area Map E](#)

Kameoka  
(25 mins. train & 25 mins. taxi ride from Kyoto Station)





## Yuzen Washi Dyeing



### Experience

**Y**uzen dyeing is a technique that has been traditionally used to dye kimonos. The factory is now using this technique to dye washi (Japanese paper). Meticulously hand-painted Yuzen washi paper is characterized by its traditional and distinctive Yuzen patterns and exquisite color combinations, creating a three-dimensional effect that is visually striking. Each piece should be considered a beautiful work of art.

During this experience, you will have an opportunity to choose your own color variations and work in the same dyeing studio where craftspeople work every day. You will be guided by the craftspeople as you dye your own original Yuzen washi paper. This is a unique opportunity to create your own artwork in a studio that is not typically accessible to the public.

### Steps

- **Studio tour**  
Observe craftspeople at work.
- **Color selection**  
Choose 6 colors from 20+ options.
- **Hand-dyeing**  
Apply each color using molds.

### Information

Time	2 hrs.
Pax	2~4
Requirement	12+ years old

### Plans *interpretation required*

Create Your Own Yuzen Washi **33,000 JPY / person**

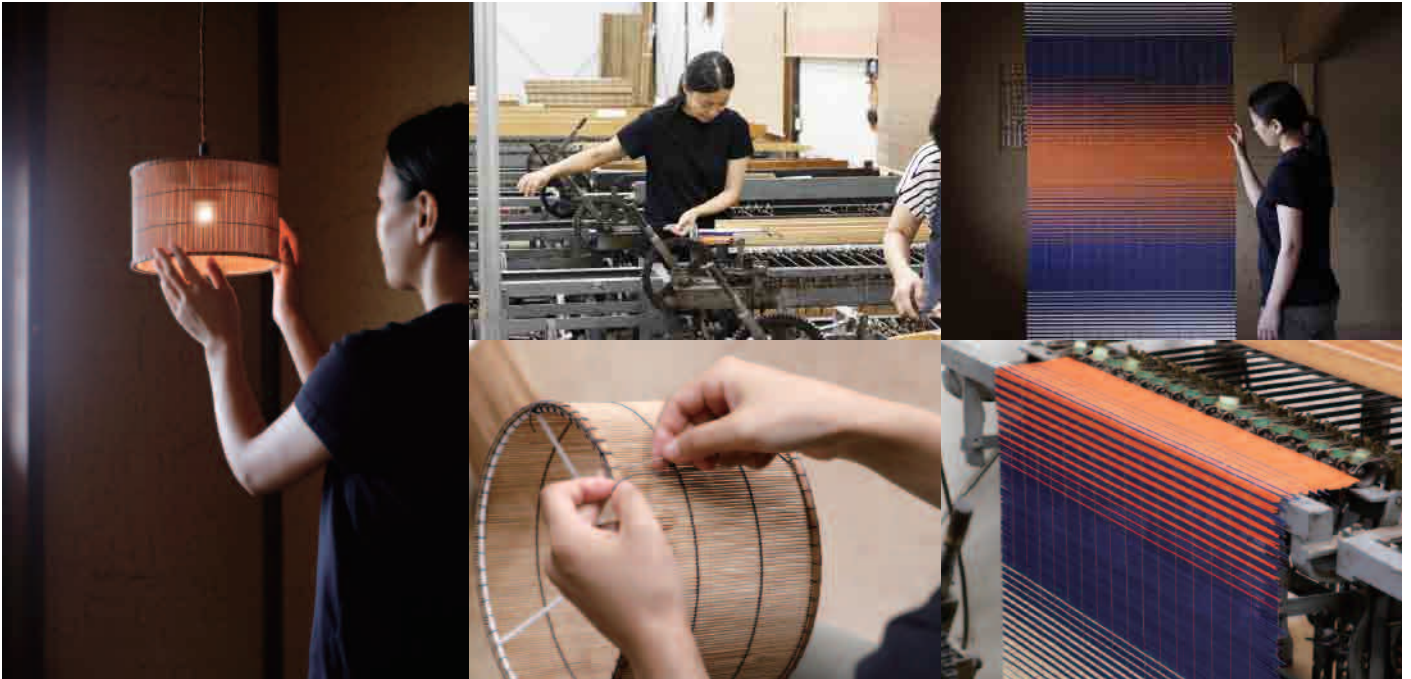
### Place ▶ [Area Map](#)

Nantan  
(30 mins. train ride & 10 mins. walk from Kyoto Station)





## Making Sudare Screen & Interior



### Experience

**S**udare, a traditional Japanese element that has existed since ancient times and remains close to the lives of Japanese people today. During this experience, you can create your own unique Sudare under the direct guidance of craftspeople. They use natural materials such as reed (yoshi), bamboo, and rush (makomo), crafting a variety of traditional sudare crafts including misu, sudare (bamboo blinds), and miscellaneous goods. In Japanese households, Sudare typically comes in a light brown color. However, the craftspeople possess the skill to dye the bamboo used in Sudare in various colors, allowing you to add a touch of design to your Sudare. During the experience, you can choose your favorite colors to create a one-of-a-kind Sudare.

### Steps

- **Design Sudare**  
Choose colors of bamboo and determine the color scheme.
- **Weave the Sudare**  
Adjust the machine and weave sudare.
- **Cut Bamboo**  
Cut the edge of bamboo to a specific length and shape it beautifully.
- **Attaching Thick Bamboo Ends**  
Attach distinctive bamboo pieces using a unique technique.

### Information

Time	4 hrs.
Pax	1~6
Requirement	9+ years old

### Plans *interpretation recommended*

A : Gradation Sudare Screen	<b>63,000 JPY / person</b>
B : Sudare Lamp Shade	<b>50,000 JPY / person</b>

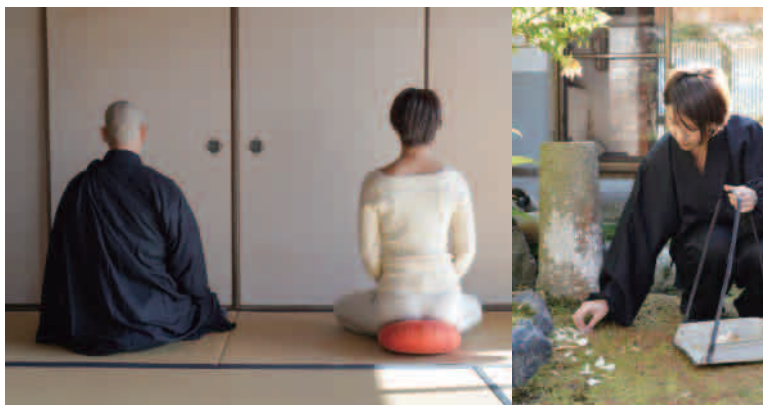
### Place ▶ [Area Map E](#)

Kameoka  
(30 mins. train ride & 10 mins. walk from Kyoto Station)





## Experience Buddhism and Acupuncture



### Experience

You will visit a Soto Sect. Zen temple. Ufuzan Inryoji Temple/ Mokujiki Acupuncture Clinic is located on the mountainside surrounded by nature in Nantan City. During this experience, you can spend time participating in the morning rituals, zazen meditation, and other activities that make up a day of Zen monk, all under the guidance of a monk who is also a qualified acupuncturist. In zazen section, you can receive instruction on a comfortable sitting posture developed by a monk.

### Information

Time	21 hrs.
Pax	2~5
Requirement	12+ years old

### Plans *interpretation required*

Buddhism and Acupuncture	24,000 JPY/ person
--------------------------	--------------------

### Steps

- **Zazen (Evening, Early Morning, Morning) :**  
Receive instruction on a comfortable sitting posture developed by the monk with qualifications in acupuncture and moxibustion.
- **Yakuseki (Evening Meal)**
- **Morning Service :** Participate in morning rituals and some of the training of the monk.

### ◆ Place ▶ [Area Map E](#)

Nantan  
(30 mins. train ride and 10 mins. taxi ride from Kyoto Station)



## Original Stool Craft



### Experience

You will visit a woodworking studio in Kameoka City and, under the guidance of the craftsperson, create a wooden chair.

### Information

Time	3 hrs.
Pax	2~4
Requirement	12+ years old

### Plans *interpretation required*

Craft Original Stool	23,500 JPY / person
----------------------	---------------------

### Steps

- **Tour the Studio :**  
Observe tools and artworks of the craftsperson.
- **Craft Your Chair:** Assemble your chair.
- **Finish Surface :** Smooth out and paint the surface.

### ◆ Place ▶ [Area Map E](#)

Kameoka  
(30 mins. train ride and 10 mins. taxi ride from Kyoto Station)



## Dyeing Experience in Front of the Scenic Beauty of Arashiyama



### Experience

Along the banks of the Katsura River, reflecting the beautiful seasonal colors of Arashiyama in Kyoto, lies the studio of a dyeing artist, who has developed a unique dyeing technique called “Yume-kôrozome,” based on traditional methods and discovered from the research on the garments of the emperor. This technique allows the color of the fabric to change with exposure to sunlight. The studio, once a traditional inn and surrounded by stunning nature, has been transformed by the artist into a space filled with playful and seasonal decorations, delighting all visiting it. Every corner of the studio reflects the artist’s creativity and attention to detail. In this experience, you will walk around the studio, view the artist’s meticulously crafted works, and have the opportunity to try your hand at dyeing. During the scarf dyeing experience, you can dye a 100% silk scarf (45cm x 180cm) using the Yume-kôrozome method, which changes color under sunlight. For the jeans dyeing experience, you will bring your own white jeans and enjoy a dyeing experience using standard dyes.

### Steps

- **Studio Tour**  
Visit the gallery displaying works including ones dyed with Yume-kôrozome.
- **Dyeing Experience**  
Enjoy a hands-on dyeing experience, either dyeing a scarf with Yume-Korozome technique or dyeing jeans.

### Information

Time	1.5 hrs.
Pax	2~4
Requirement	13+ years old

### Plans *interpretation recommended*

A : Scarf Dyeing (Yume-kôrozome)	<b>31,000 JPY / person</b>
B : Jeans Dyeing	<b>47,000 JPY / person</b>

### Place ▶ [Area Map C](#)

Center of Kyoto City





## Authentic Tea Ceremony Experience



### Experience

**Y**ou can experience authentic tea ceremony in just 2 hours. Designed for beginners, you'll have the opportunity to immerse yourself in a traditional tea room, handle genuine tea utensils, receive detailed explanations about tea preparation, the garden, and the tea room setup, and then join in the tea ceremony yourself. You can also witness rare items like exquisite raku ware tea bowls and hanging scrolls while learning about them. The welcoming guidance makes it easy for anyone to participate in the world of traditional tea culture. For your tea experience, you can choose between participating in a traditional tea ceremony in an authentic tea room with time-honored rituals or enjoying a more contemporary and comfortable setting with chairs.

### Steps

- **Discover Culture and Manners**  
Receive friendly guidance on the garden, tea room, and tea ceremony.
- **Witness Rare Treasure**  
Learn about and observe precious items like hanging scrolls and Raku ware.
- **Join Tea Ceremony**  
Experience an authentic tea ceremony, and choose between a traditional tea room or a modern space for your participation.

### Information

Time	Plan A: 2 hrs. Plan B: 3 hrs.
Pax	2~11
Requirement	6+ years old

### Plans *interpretation required*

- A : Authentic Tea Ceremony Experience  
**29,350 JPY / person**
- B : Plan A, with Meal and Sake  
**55,000 JPY / person**

### Place ▶ [Area Map C](#)

Center of Kyoto City





## Culture behind Traditional Food "Mochi"



### Experience

**M**ochi, a traditional Japanese food, has a long history dating back to the Yayoi period (BC 10th century - 3rd century). It has been regarded as a sacred food, often made through the cooperation of many people. In this experience, you will visit an old-established mochi shop in Kyoto City, where you will tour the factory and participate in a mochi-pounding (mochitsuki) experience. During the tour, you can observe the traditional machinery used to make mochi, as well as the process of making wagashi (Japanese sweets). In the mochitsuki experience, you will use traditional tools to pound the mochi yourself, and then enjoy it in a way recommended by the shop.

Through this experience, you will savor the deliciousness of mochi and gain a deeper appreciation of Japanese food culture.

### Steps

- **Cultural and Historical Explanation**  
Learn about the significance of seasonal food for Japanese people, as well as the cultural importance of mochi.
- **Factory Tour**  
Observe the wagashi production factory and the traditional mochi-pounding machine.
- **Mochi-pounding Experience**  
Use traditional tools to make your own mochi by hand.
- **Mochi Tasting**  
Taste the mochi you made during the experience.

### Information

Time	2 hrs.
Pax	4~20
Requirement	None

### Plans *interpretation required*

Culture behind Traditional Food "Mochi"hi	<b>20,000 JPY / person</b>
---	----------------------------

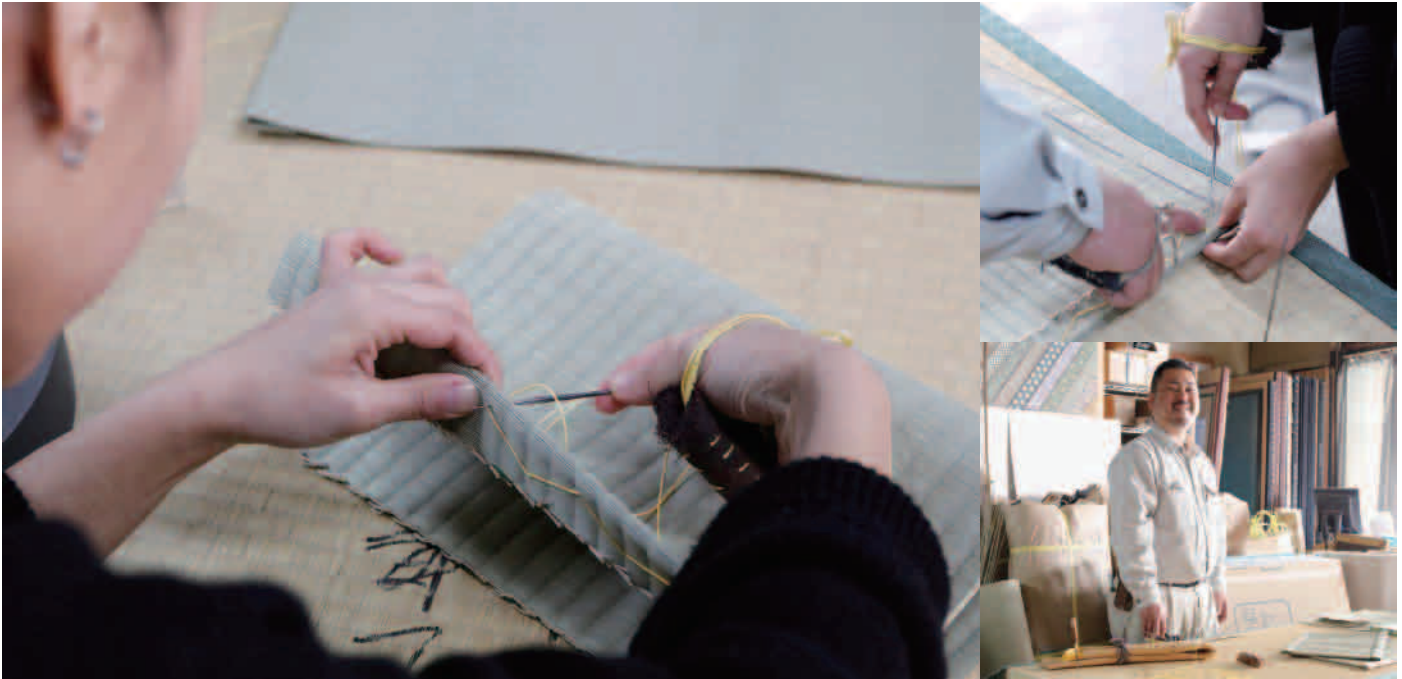
### Place ▶ [Area Map C](#)

Center of Kyoto City





## Tatami Production Tour



### Experience

**T**atami is a traditional flooring material that can still be found in most Japanese houses, adding a beautiful and quintessential Japanese appearance as well as the pleasant fragrance of rush grass to the homes.

During this experience, you will have the opportunity to observe the process of making tatami and create a small coaster using tatami.

### Steps

#### ■ Tatami-Making Process Tour

Observe the craftsman as he goes through the process of crafting tatami. Learn about the evolution of techniques and materials from ancient to modern times.

#### ■ Coaster Crafting

Create your own original small coaster.

### Information

Time	2 hrs.
Pax	~8
Requirement	9+ years old

### Plans *interpretation required*

Tatami Production Tour **21,500 JPY / person**

### Place ▶ [Area Map C](#)

Center of Kyoto City







## Designs Brought to Life Through Yuzen Dyeing



### Experience

'Suribitta' is a technique of Kyoto Yuzen stencil dyeing that originated in the Edo period. Under the guidance of an expert from a studio with over 100 years of history, you will experience creating your own original goshuincho (stamp book) or small fukusa cloth. You can choose from 14 different stencil designs and enjoy an authentic dyeing process. The expert will explain the meanings behind the patterns and share interesting stories related to Yuzen dyeing. For a finishing touch, real gold leaf can be applied. The dyed fabric will be crafted into items and delivered to you at a later date.

### Steps

- **Explanation of Yuzen Culture and Techniques**  
Overview of the rich cultural history and techniques of Yuzen dyeing.
- **Select Design and Colors**
- **Dye the Fabric**  
Apply layers of color and techniques to dye the fabric.
- **Apply Gold Leaf**
- **Emboss Name (Performed by the expert)**
- **Completion as Fukusa or Goshuincho**

### Information

Time	2.5 hrs.
Pax	2~8
Requirement	10+ years old

### Plans *interpretation required*

A : Small Fukusa Cloth	<b>21,500 JPY / person</b>
B : Goshuincho (stamp book)	<b>25,500 JPY / person</b>

### Place ▶ [Area Map C](#)

Center of Kyoto City





## Collaborate with two Japanese traditional potters



### Experience

The studio you visit is run by a couple of skilled craftspeople who each bring their traditional techniques from different regions of Japan: Kiyomizu-yaki from Kyoto and Koishiwara-yaki from Fukuoka. Together, they combine their expertise to create unique and beautiful tableware. In this experience, you will create your own pottery under their direct guidance. Your piece will then be adorned with a pattern using the 'Tobikanna' technique, a specialty of one of the experts, fired carefully, and shipped to you.

### Steps

- **Learn Culture**  
Explore the origins of modern ceramic art created through the fusion of two pottery techniques.
- **Live Demonstration**  
Observe the artists' pottery-making process.
- **Pottery Crafting (Hand-Thrown)**  
Create 1-2 pieces of pottery by hand.
- **Gift (Plan B Only)**  
Give you a 'Tobikanna' bowl from the studio as a set with your artwork.

### Information

Time	2 hrs.
Pax	2~6
Requirement	6+ years old

### Plans *interpretation required*

A : Create Your Work	<b>31,000 JPY / person</b>
B : Create Your Work with the Potters' Dish	<b>39,000 JPY / people</b>

### Place ▶ [Area Map C](#)

Center of Kyoto City





## Shakumaru Chochin



### Experience

The studio you visit is the maker of iconic Kyoto Chochins including the one in front of Minami-za theater. They also collaborate with prominent international brands. You will join an immersive Chochin crafting experience of ceiling-hanging Chochin with a 30cm diameter, where you'll get to participate in the entire lantern-making process, from assembling the bamboo frame to applying traditional Japanese paper and adding intricate characters or designs. The workshop offers you the opportunity to engage in every step of Chochin creation, making it a truly hands-on and memorable experience.

### Steps

- **Preparation of Bamboo**  
Prepare bamboo to be used as the frame for the Chochin.
- **Attach Bamboo**  
Attach bamboo to the mold and shape the Chochin.
- **Attach Vertical Thread**  
Attach vertical threads to support the bamboo.
- **Paste Washi**  
Apply washi paper to form the body of the Chochin.
- **Write Patterns**  
Add your favorite letters and/or patterns.

### Information

Time	3 hrs.
Pax	2~10
Requirement	9+ years old

### Plans *interpretation required*

Shakumaru Chochin **54,000 JPY / person**

### Place ▶ [Area Map C](#)

Center of Kyoto City





## Tsuzure Weaving and Plant Dyeing



### Experience

'Tsuzure weaving' is one of Japan's traditional weaving techniques, known for its delicate and intricate patterns. It is primarily used in crafting traditional Japanese garments such as kimonos and obis. In this experience, you will have the opportunity to visit a rarely seen Tsuzure-ori and plant dyeing studio in the western part of Kyoto. Here, you can observe skilled craftspeople meticulously practicing traditional Tsuzure weaving and plant dyeing. You can also immerse yourself in the hands-on process of dyeing yarn with plants and trees, as well as engage in either Hira Weaving or Tsuzure Weaving (depending on the plan you choose) under the guidance of these craftspeople.

### Steps

- **Demonstration of Tsuzure Weaving**  
Observe the delicate process of Tsuzure weaving.
- **Natural Dyeing Experience**  
Dye a handkerchief using natural plant dyes.
- **Hira-ori Coaster Making Experience (Plan A Only)**  
Create a coaster using Hira-ori weaving.
- **Tsuzure Weaving Experience (Plan B Only)**  
Create a cardcase using Tsuzure weaving. Tsuzure weaving is a time-intensive process. The craftspeople will complete the work and mail it to you at a later date.

### Information

Time	2 hrs
Pax	Plan A: 2~4 Plan B: 1~3
Requirement	10+ years old

### Plans *interpretation required*

A : Hiraori Coaster and Natural Dyeing	<b>14,800 JPY / person</b>
B : Tsuzureori Cardcase and Natural Dyeing	<b>19,800 JPY / 1 person</b> <b>28,800 JPY / 2 people</b> <b>31,350 JPY / 3 people</b>

### Place ▶ [Area Map D](#)

Between Kyoto and Osaka  
(10 mins. train & 15 mins. taxi ride from Kyoto Station)





## Exclusive Experience of Water and Noble Sports of Kemari

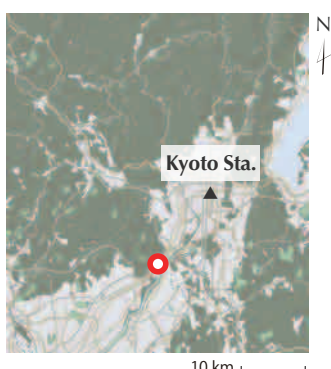


### Experience

You will visit Minase Jingu Shrine, established over 700 years ago and closely associated with Japanese significant historical events. The shrine is renowned for its pure and sacred water, which is still highly valued today and used in the production of Suntory's whiskey and beer. Utilizing this esteemed water, you can enjoy a traditional tea ceremony and try an omikuji (fortune-telling), where the fortune is revealed as the text becomes visible when exposed to water. Additionally, you will experience the traditional Japanese sport "kemari", once cherished by nobles and the imperial family. (Kemari is a ball game similar to soccer, where players pass a uniquely shaped ball, called a "kemari", without letting it touch the ground.) During the kemari experience, you will don a kariginu, a type of traditional Japanese attire, allowing you to fully immerse yourself in the ancient Japanese way of life.

### Place ▶ [Area Map D](#)

Between Kyoto and Osaka  
(20 mins. train & 5 mins taxi ride  
from Kyoto Station)



### Steps

- **Introduction to the Shrine**  
Discover the history and significance of Minase Shrine through a guided session with the shrine's priest.
- **Purification and Tamagushi Offering**  
Cleanse yourself with sacred water and participate in a religious ritual (optional).
- **Wearing Traditional Attire: "Kariginu"**  
Learn about the distinctive features of traditional Japanese attire and try wearing a "Kariginu" yourself.
- **Photography in Traditional Attire**  
Take photos in various scenic spots within the shrine while dressed in traditional attire.
- **"Kemari" Experience**  
Explore the cultural significance and rules of Kemari, and enjoy the experience of playing it.
- **Tea and Sacred Water Experience**  
Participate in a tea ceremony held in a special area of the shrine, where the tea is prepared using sacred water.

### Information

Time	2.5 hrs.
Pax	2~13
Requirement	13+ years old

### Plans *interpretation required*

Kemari and Tea Ceremony **28,500 JPY / person**



## Buddhism & Japanese Garden



### Experience

**S**hoboji Temple, located on the west side of Kyoto, is commonly known as the 'Temple of Stones'. It features a collection of various rocks from all over the country, each symbolizing different animals.

You can have three unique experiences here. One is a guided tour of its Japanese garden led by a renowned gardener from Kyoto. Another is a Buddhism explanation and experience guided by the temple's monk. The other is a sand-pattern (samon, symbolizing the flow of water in the garden) drawing experience, also guided by the monk.

### Steps

- **Learn Culture**  
Explanation by monks about gardens and statues.
- **Stone Garden Guide (Plan A Only)**  
A garden tour guided by a gardener.
- **Boundary Stone Crafting (Plan A Only)**  
Create stone boundary markers indicating 'No Entry'.
- **Religious Practice (Plan B Only)**  
Learn the Heart Sutra and chant it while playing the drum.
- **Sand Pattern Drawing (Plan C Only)**  
Enter the usually restricted stone garden and experience sand pattern drawing.

### Information

Time	PlanA:3hrs.,B/C:2hrs.
Pax	2~8
Requirement	6+ years old

### Plans *interpretation included*

A : Japanese Garden Guided Tour	<b>20,350 JPY / person</b>
B : Buddhism Experience	<b>13,200 JPY / person</b>
C : Early Morning Sand Drawing Experience	<b>12,100 JPY / person</b>

### Place ▶ [Area Map D](#)

Between Kyoto and Osaka  
(6 mins. train & 15 mins. taxi ride from Kyoto Station)



10 km



## Tour Washoku and Traditional Restaurant



### Experience

This is a tour that allows you to fully enjoy traditional Japanese kaiseki cuisine. You will join a guided tour of a renowned traditional restaurant, which is also one of foremost examples of retro-modern Japanese architecture. After savoring the rich flavors of Kyoto cuisine, carefully selected from seasonal ingredients, we will start the tour led by local architects who are also involved in the restoration of traditional townhouses. With their guidance, you can explore buildings constructed in various eras, including areas that are normally inaccessible.

### Steps

- **Dining at Traditional Restaurant**  
Enjoy a seasonal Kyoto kaiseki meal.
- **Glance at the Kitchen**  
Take a brief tour of the kitchen of the long-established restaurant.
- **Modern Architecture Tour**  
Step inside the historical architectures and bamboo grove around, receiving guided explanations.

### Information

Time	3hrs.
Pax	2~10
Requirement	12+ years old

### Plans *interpretation included*

Tour Washoku and  
Traditional Restaurant  
(incl. Kyoto Kaiseki meal) **53,240 JPY / person**

### Place ▶ [Area Map D](#)

Between Kyoto and Osaka  
(10 mins. train & 5 mins. taxi ride from Kyoto Station)





## Bamboo Craft for Tea Ceremony



### Information

Time	Plan A: 3 hrs. Plan B: 4 hrs.
Pax	Plan A: 5~10 Plan B: 2~10
Requirement	12+ years old

### Plans *interpretation required*

A : Chashaku (tea scoop)	<b>15,400 JPY/ person</b>
B : Smoked Bamboo Hanaire (ikebana container or flower vase)	<b>38,500 JPY/ person</b>

### Experience

You will craft bamboo tea tools under the guidance of a producer located in the western region of Kyoto, renowned for its bamboo production. During this experience, you will have the opportunity to create your own Chashaku (tea scoop), or Hanaire (ikebana container or flower vase) crafted from smoked bamboo. In the case of the Hanaire, you will personally select the materials and determine the angle that best showcases your chosen material as you create the vase.

Both of these experiences involve the hands-on creation of exquisite works under the direct guidance of highly skilled craftspeople with extensive experience in bamboo harvesting and crafting.

### Steps

- **Explanation of Tea Culture (Plan A Only)**  
Learn about Japanese tea culture.
- **Craft Chashaku (Plan A Only)**  
Shape thinly cut bamboo into a tea scoop.
- **Tea Ceremony (Plan A Only)**  
Conduct a tea ceremony using the scoop.
- **Bamboo Grove Walk (Plan B Only)**  
Take a guided stroll through the beautiful bamboo grove.
- **Ikebana Vase Crafting (Plan B Only)**  
Select smoked bamboo and craft a vase.
- **Tea Time (Plan B Only)**  
Enjoy tea and sweets while gazing at the bamboo grove.



## Private Wagashi Making Experience



### Information

Time	2 hrs.
Pax	4~10
Requirement	6+ years old

### Plans *interpretation required*

Private Wagashi Making Experience	<b>23,500 JPY / person</b>
-----------------------------------	----------------------------

### Steps

- **Learn about 'Wagashi'**  
Learn the process and meaning behind wagashi making.
- **Making Wagashi**  
Create charming Japanese sweets suitable for the season.
- **Tasting**  
Enjoy the handmade wagashi while gazing at the beautiful temple garden.

### Experience

You can make your own wagashi while closely observing the spectacular handiwork of the wagashi craftspeople at a locally-loved wagashi shop. We will rent out a usually-closed temple for the exclusive experience. In the end, you can enjoy some sweets and matcha while admiring the beautiful temple garden.





## Traditional Kimono Experience



### Experience

We offer an authentic kimono experience provided by kimono specialists and photographers who have long been involved in wedding photography next to Nagaoka Tenmangu Shrine, the west side of Kyoto. In the Kimono Fitting and Photography Plan, you will receive advice from kimono experts and experience dressing in your chosen kimono. Following the fitting, you can enjoy a professional photo shoot around the beautiful Hachijo-gaike area, showcasing the stunning scenery of Nagaokakyo. In the Wedding Kimono Plan, you can select from a range of wedding attire, including uchikake (outer kimono) and hakama (formal trousers), and receive professional dressing and hair and makeup services. Afterward, you can enjoy a professional photo shoot in the picturesque Hachijo-gaike area.

### Information

Time	Plan A: 3 hrs. Plan B: 3.5 hrs.
Pax	Plan A: 2~6 Plan B: 1group (1~2)
Requirement	Plan A: 3+ years old Plan B: 18+ years old

### Plans *interpretation required*

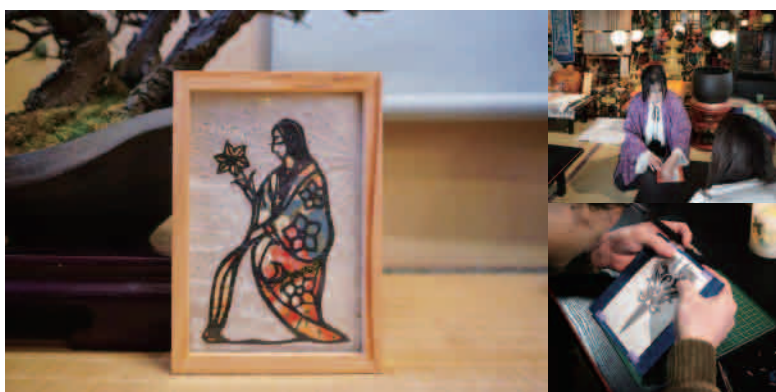
A : Create Lifelong Memories: Kimono Fitting & Photography Experience	<b>39,500 JPY/ person</b>
B : Create Lifelong Memories: Wedding Kimono Fitting & Photography Experience	<b>190,000 JPY/ person</b>

### Steps

- Learn Kimono Culture and Variations
  - Choose Uchikake or Montsuki Hakama (Plan B Only)
  - Hair / Makeup (Plan B Only)
  - Kimono Fitting Experience
  - Photography
- Enjoy a photo shoot at specially selected seasonal locations.  
\* Includes 10 photos with Plan A / approximately 200 photos with Plan B.



## Delicate Paper Cutting Art Experience



### Experience

At a temple in western Kyoto, experience paper cutting art under the guidance of the temple's artist. Select designs such as Sanskrit characters or dragons, and cut along the outlines with a paperknife. Afterward, tour the main hall, enjoy candlelit views, and relax with herbal tea, savoring the temple's serene atmosphere.

### Information

Time	3 hrs.
Pax	2~8
Requirement	10+ years old

### Plans *interpretation required*

Delicate Paper Cutting Art Experience	<b>11,000 JPY / person</b>
---------------------------------------	----------------------------

### Steps

- Paper Cutting Art Experience
- Frame the Work Using Japanese Paper
- Tour the Temple & Relax with Herbal Tea

#20~23

### ◆ Place ▶ [Area Map D](#)

Between Kyoto and Osaka  
(10 mins. train & 5 mins taxi ride from Kyoto Station)



## Japan Blue



### Experience

**Y**ou are visiting an indigo dyeing craftsperson who is also active in Brooklyn and New York. Unlike other indigo dyeing experiences, NO chemical dyes are used here. The indigo plants are grown by the craftsperson's own hand, resulting in a dye that is gentle on the skin and does not fade over time.

The indigo dyeing process is based on a technique dating back to the Muromachi period (1336-1573), which the craftsperson has meticulously studied and perfected. This process allows you to create a truly unique piece that will never be replicated.

The dyeing process typically takes about 3 hours and involves 1 to 5 dyeing stages to achieve a vibrant indigo color. The shading can be adjusted according to your preferences during these stages.

### Steps

- **Learn Technique and Culture Related**  
Gain insights into the history of indigo and the differences compared to chemical dyes.
- **Learn About 'Ai' (Indigo)**  
Tour the fermentation barrels used to ferment the materials.
- **Dip in Indigo Solution**  
Slowly immerse the fabric into the indigo dye.
- **Oxidate in Air**  
Remove the fabric from the indigo dye solution and squeeze it to allow oxidation to occur in the air.
- **Rinsing in Water**  
Rinse the fabric in water.

### Information

Time	3 hrs.
Pax	2~20
Requirement	9+ years old

### Plans *interpretation recommended*

Japan Blue	<b>30,500 JPY / person</b>
------------	----------------------------

### Place ▶ [Area Map D](#)

Between Kyoto and Osaka  
(10 mins. train & 15 mins. taxi ride from Kyoto Station)





## Stone sculptures 'Omamori'



### Experience

This is an experience that takes you away from the hustle and bustle of the city and immerses you in the world of stone crafting, surrounded by nature in the craftsperson's studio. Guided by the craftsperson, you will create a stone sculpture called 'Omamori'.

Omamori is a mystical stone sculpture. When you carve it yourself, it becomes like a companion with whom you can converse. Omamori is more than just a decoration or tool; it's a guardian that watches over you and serves as a reminder of a loved one who always resides in your heart.

### Steps

- **Learn Usage of Tools**  
Receive guidance from the craftsperson on how to use the tools for carving the stone.
- **Carve the Facial Features**  
Sculpt the face of the stone deity to give it a gentle expression.
- **Sculpt the Torso**  
Carve intricate details, such as the hands and feet, of the stone deity's torso.

### Information

Time	3~4hrs.
Pax	1~6
Requirement	Strong enough to endure carving of 3 hours.

### Plans *interpretation required*

Stone sculptures 'Omamori' **24,750 JPY / person**

### Place ▶ [Area Map D](#)

Between Kyoto and Osaka  
(6 mins. train & 15 mins. taxi ride from Kyoto Station)





## Participate in a Sacred Fire Ceremony



### Experience

Enjoy an exclusive opportunity to access the normally private main hall of Tanukidanisan Fudoin Temple. Here, a highly trained monk will perform a grand Goma ritual, an esoteric Buddhist ceremony, in front of the revered deity Tanukidani Fudo Myoo. This experience goes beyond mere observation. You will actively participate in the ritual, taking part in the steps typically performed by the monk. Before the ceremony, you will write your personal wish on a wooden plaque called a gomagi, which will be placed into the flames as part of the ritual.

After the experience, you will receive a goma-fuda, a sacred talisman imbued with the blessings from the ritual.

Additionally, for those interested, there is an option to experience Buddhist rituals and ceremonies, including parts of the initiation rites for becoming a monk. This is an opportunity to enjoy Buddhist ceremonies that are inaccessible even to Japanese people.

### Steps

- **Introduction**  
Receive a brief introduction to the history of the temple, Shugendo (Japanese mountain asceticism), and the Goma ritual.
- **Private Goma Ritual Experience**  
Experience a private Goma ritual in the temple's inner sanctum.
- **Gomagi Insertion**  
During the Goma ritual, personally insert your gomagi (ritual wooden plaque) into the flames.
- **Offering of Goma-Fuda (sacred talisman)**

### Information

Time	2 hrs.
Pax	4~8
Requirement	10+ years old

### Plans *interpretation required*

Participate in a Sacred Fire Ceremony	<b>55,000 JPY / person</b>
---------------------------------------	----------------------------

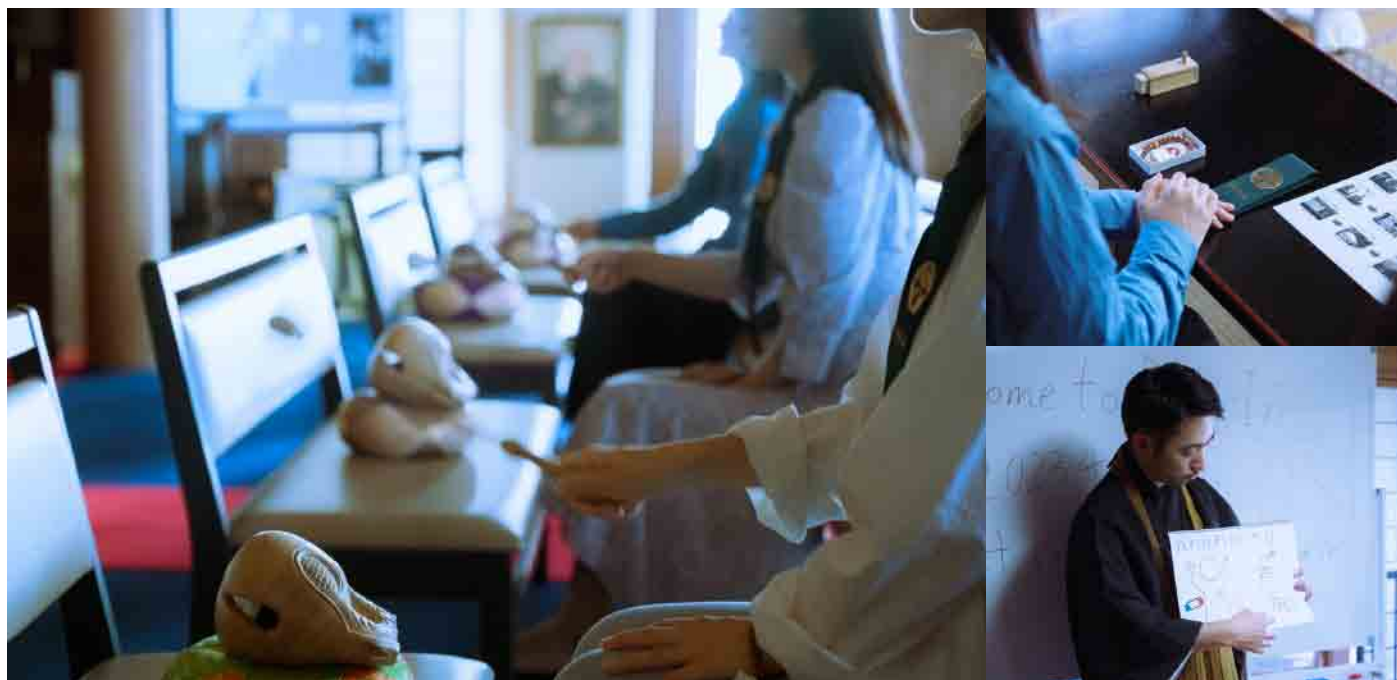
### Place ▶ [Area Map C](#)

Kyoto City  
(30 mins. taxi ride from Kyoto Station)





## One-day Buddhism Experience



### Experience

You will visit a temple located in Fushimi, Kyoto, with a history spanning approximately 800 years. During the experience, under the direct guidance of the priest, you will learn about the daily mindset of monks and the etiquette of prostration (Gotai Touchi). Additionally, after the prostration, you will have the opportunity to participate in a prayer experience while actually striking the wooden fish (mokugyo). We provide prayer beads that are used during the prostration, allowing you to choose your preferred set as a souvenir to take home after the experience. Following the experience, you will talk with the priest over a specially prepared tea, carefully chosen by the priest.

### Steps

- **Learn Buddhist Culture**  
Gain insights into the practices and beliefs of Buddhist monks.
- **Wear Wagesa**  
Don the ceremonial robe that Buddhist monks wear.
- **Apply Incense (Zuko)**  
Apply fragrant incense to cleanse the body.
- **Choose Prayer Beads (Juzu)**  
Select your preferred prayer beads.
- **Posture and Movement**  
Learn the proper etiquette for standing, sitting, and walking during rituals.
- **Meditation and Wooden Fish**  
Engage in meditation while striking the wooden fish.

### Information

Time	3 hrs.
Pax	_____
Requirement	12+ years old

### Plans *interpretation required*

Buddhism Experience	<b>44,000 JPY / person</b>
---------------------	----------------------------

### Place ▶ [Area Map C](#)

Kyoto City • Uji City  
(20 mins. taxi ride from Kyoto Station)





## All the basics of Lacquerware



### Experience

You will visit the Kawada district in Fukui Prefecture, Japan, renowned for its lacquerware, and have the opportunity to immerse yourself in the traditional art of Japanese tableware production. In a single day, you'll visit three skilled craftspeople, each specializing in different steps of lacquerware production.

You will witness their craftspersonship, and with their expert guidance, create your own unique bowls or lunch boxes.

Typically, the world of lacquerware involves a complex, time-consuming process spanning several months. However, this tour streamlines the experience, allowing you to explore three key steps in a condensed timeframe.

After each artisan completes your work, your creations will be sent to you by mail, ensuring you can cherish and enjoy the fruits of your trip.

### Steps

- **Shape Wood (Plan A)**  
Shape wood into a bowl using a lathe.
- **Tour Woodworking Studio (Plan B)**  
Observe the process of making bento boxes.
- **Lacquering**  
Polish the created item and apply lacquer.
- **Painting**  
Paint your chosen design with a fine brush, with assistance from the craftspeople.

### Information

Time	7 hrs.
Experience for groups of 5 people	
Requirement	10+ years old

### Plans *interpretation required*

A : Carve out a Bowl	<b>350,000 JPY / group</b>
B : Fit into a Bento Box	<b>400,000 JPY / group</b>

### Place ▶ [Area Map G](#)

Kawada  
(20 mins. Taxi ride from Echizen Takefu Station)





## Create Bamboo Fence in a Temple



### Experience

This is an experience of making a bamboo fence at a historic temple/shrine in Kyoto under the direct instructions of a master craftspeople.

The work created will be installed in the venue for a long time, contributing to the preservation and improvement of the traditional landscape in the temple.

The craftspeople you work with has gained a high reputation for their high level of techniques for handling bamboo and foresight in selecting quality bamboo, and has been involved in the production and restoration of bamboo fences for historical temples and shrines, such as the restoration of Katsura Rikyu's bamboo fence.

### Steps

- **Design (in advance)**  
Study the venue and work out a design.
- **Foundation**  
Measure the site and install the foundation.
- **Preparation**  
Clean and split bamboo.
- **Assembly**  
Assemble the bamboo to realize the design.
- **Cording**  
Attach black cords to the bamboo fence.

### Information

Time	8 hrs.
Experience for groups of up to 10 people	
Requirement	12+ years old

### Plans *interpretation required*

Create bamboo fence in a temple	<b>200,000+ JPY / group</b>
---------------------------------	-----------------------------

### Place ▶ [Area Map B](#)

A temple/shrine in Kyoto (Coordinated upon request.)





## Create and Perform Traditional Comedy



### Experience

**K**yogen is a traditional Japanese performing art created in the Muromachi period (1333-1573). Together with Noh, Kyogen is registered as an Intangible Cultural Heritage of Japan by UNESCO. In this experience, you will not only watch Kyogen, but also create a new piece together with an experienced actor. The workshop is held at a private temple or a place you prefer. After learning the basics of Kyogen, you and the Kyogen actor will also create a new Kyogen piece based on a story provided by you beforehand or on the spot, and you can also perform in the new piece yourselves, making use of the acting skills you learn. This experience can be provided anywhere in Japan.

### Steps

- **Learn About the Culture**  
Explore the fundamentals and enjoyment of the comic theater.
- **Learn Acting Patterns**  
Familiarize yourself with various acting patterns.
- **Create Your Own Kyogen Piece**  
Collaboratively create a new Kyogen piece based on participants' anecdotes and ideas.
- **Dress Costume**  
Experience the traditional dressing process as a Kyogen actor.
- **Perform**  
Perform the Kyogen piece you've created alongside Kyogen actors.

### Information

Time	3 hrs.
Experience for groups of up to 20 people	
Requirement	12+ years old

### Plans *interpretation required*

Create and Perform Traditional Comedy	<b>110,000+ JPY / group</b>
--	-----------------------------

### Place ▶ [Area Map A](#)

All over Japan







## Sahari Orin Casting Tour



### Experience

You are visiting one of the few studios in Japan that still practice the traditional method of crafting orin, gongs, and other ritual instruments, especially used in Buddhism ceremonies. This studio takes pride in handcrafting orin with a distinctive clear sound for over 190 years. During your visit, you will witness the entire process of casting Sahari and experience the very moment when an orin is created. As part of the experience, participants will receive a LinNe Chibi, a small orin suitable for meditation, crafted from the same materials and using the same production process as traditional orin. If you wish to purchase additional products, they are available at the experience location.

### Steps

- **Casting**  
Observe the traditional sand-mold casting process, from baking the ceramic molds to the sequential pouring of the mixed alloy into the molds, with detailed explanations provided.
- **Wheel Carving**  
Witness the process of using a wheel to refine the surface of the cast orin to produce beautiful tones.

### Information

Time	5 hrs.
Experience for groups of up to 10 people	
Requirement	_____

### Plans *interpretation included*

Sahari Orin Casting Tour	<b>64,000 JPY / group</b>
--------------------------	---------------------------

### Place ▶ [Area Map C](#)

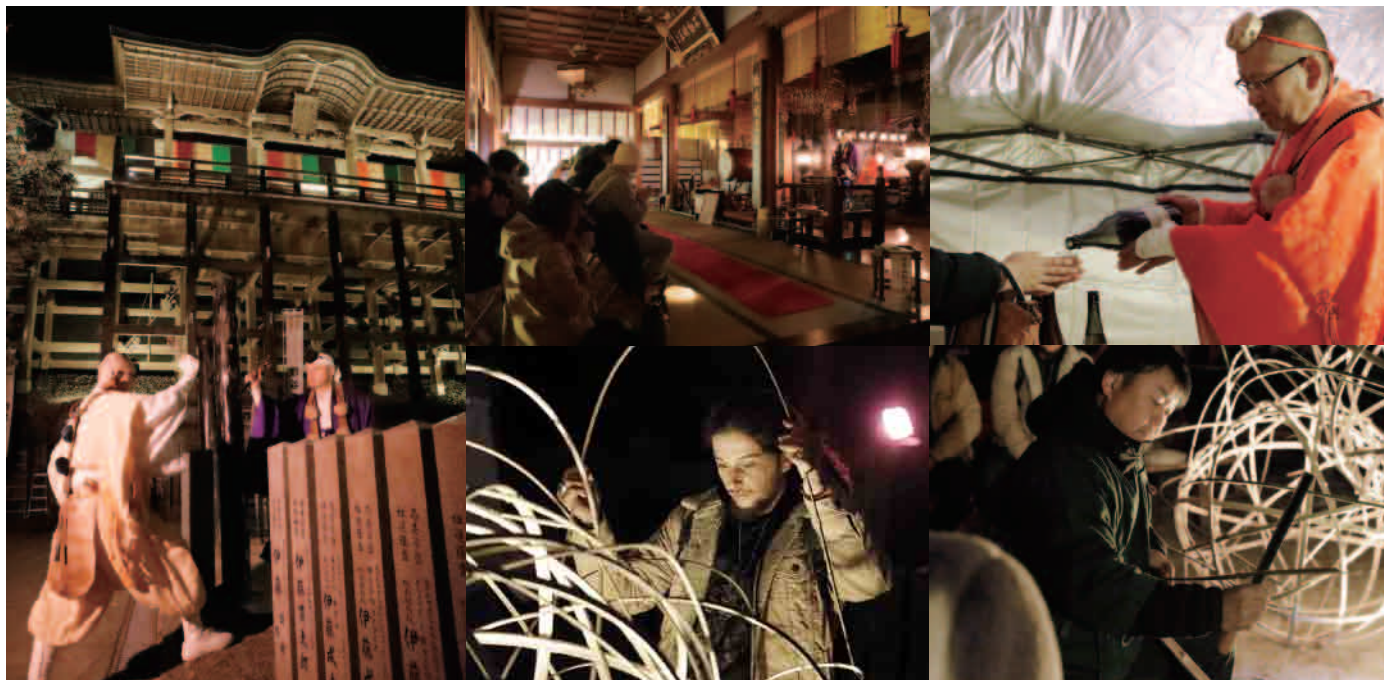
Kyoto City • Uji City  
(20 mins. taxi ride from Kyoto Station)





# Night Festival of the Hidden Mountain Temple

October 18th and 19th, 2024



## Experience

Nestled deep in the mountains of Sakyo Ward, Kyoto City, Tanukidanisan Fudo-in is a sacred site rooted in the Shugendo tradition. Within the mystical caves rests the powerful Fudo Myoo, known for vanquishing all evils with its intense spiritual energy. People from far and wide visit this revered spiritual site to seek blessings for protection, success, health, and road safety.

While the temple is usually closed at night, for this special occasion it will be fully illuminated and open to visitors. The celebration will include a Goma fire ritual performed by monks, offering the prayers and wishes of the participants to Fudo Myoo. Additionally, we offer a unique experience where you can carve out a new path for yourself using a sacred sword from the "Fire-Walking Festival." This sword is used to dispel evil as people cross the remains of a large bonfire. You can also enjoy a traditional mochi-pounding ceremony, experiencing the process of making rice cakes by hand.

Come and immerse yourself in this otherworldly experience, just 30 minutes from the heart of Kyoto, and discover the hidden spiritual oasis of Tanukidanisan.

## Information (Overview)

Dates	October 18th and 19th, 2024
Time	5:00 PM (Opening) - 8:30 PM (Closing)

## Admission Free

## Place

Sakyo-ku, Kyoto City



Tanukidanisan Fudo-in, 6 Ichijo-ji Matsubaracho, Sakyo-ku, Kyoto City, Kyoto Prefecture, 606-8156, Japan.

Approximately 30 minutes by car from Kyoto East Interchange (150 free parking spaces).

Take Kyoto City Bus Route 5 from Kyoto Station, Shijo Station, Karasuma Station, or Kyoto Kawaramachi Station and get off at "Ichijo-ji Kudarimatsu-cho." 22-minute walk from the bus stop.

Take Karasuma Line of Kyoto Municipal Subway, Get off at "Matsugasaki" station, and take taxi for ten minutes.



# Kyoto Marugoto Museum / KYONOBI

November 16th to December 8th, 2024



## Experience

The beauty of Kyoto is shaped by the picturesque landscapes created by its temples, shrines, and traditional townhouses, as well as the exquisite craftpersonship of artisans who reside here, crafting kimonos and everyday artisanal products. "Kyoto Marugoto Museum" is a special exhibition that fully embodies this essence of Kyoto, where temples, craftpersonship, and art come together in harmony.

Held in three temples with beautiful gardens that retain the timeless charm of Kyoto's Kamigyo Ward, this exhibition showcases the region's strengths in art and craftpersonship.

"KYONOBI" is not just about visiting these temples on foot but also includes guided tours of workshops to deepen your understanding. The Nishijin area is renowned for its textile production, with many studios where artisans live and work integrated into the community. Instead of workshops set up for workshops, you'll experience the everyday life of these workshops, which are typically not open to the public. Additionally, during the "Kyoto Marugoto Museum" exhibition period, there is a special viewing of artisanal works at temples and shrines.

Here, you'll find the authentic and tranquil side of Kyoto, different from its famous tourist spots, offering a rich and genuine experience.

## Information (Overview)

■ Kyoto Marugoto Museum(Temple Exhibitions)	
Dates	November 16th to December 8th, 2024
Hours	10:00 AM - 4:00 PM, 6:00 PM - 8:00 PM <small>(Hours may differ depending on each venue.)</small>
Details	<a href="https://www.kyoto-marugoto.com/">https://www.kyoto-marugoto.com/</a>

■ KYONOBI	
Dates	Held upon request
Location	Nishijin Area, Kyoto
Details(English)	<a href="https://kyonobi.net/en/">https://kyonobi.net/en/</a>
<b>Tour Price</b>	<b>9,500 JPY~</b>

## Place

Temples in Kyoto City

- Myokenji Temple
- Myokakunji Temple
- Myorenji Temple



Company Name  
Head Quarter  
Founded on

Tradi LLC (Travel Agency Authorized By Kyoto Prefecture #3-700)  
56 Anshu-higashikaicho, Yamashina, Kyoto, 6078008 JAPAN  
July 7th, 2017